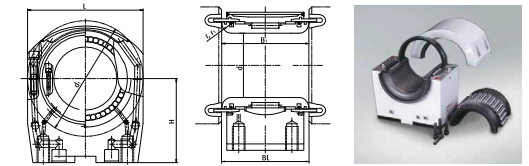


Dimensions of Bearings for Continuous Casting Machines

Split Cylindrical Roller Bearings (for segmented rolls) – RCPH/PHR Series

Bearing Numbers		Boundary Dimensions (mm)					Roll diameter d ₁	Basic Load Ratings (kN)		Guide Roll		perm. ax. movem. (mm)
Bearing	Housing	d	B ₁	r	L	H		C _r	C _{0r}	roll length BL	Radius r ₁	
100RCPH171	100PHR211	100	154	18	200	145	210	405	950	155	18	± 10.0
100RCPH201	100PHR231	100	169	15	235	132	225	605	1 390	170	15	± 8.0
110RCPH181	110PHR221	110	139	15	220	225	220	450	1 090	140	15	± 9.0
110RCPH191	110PHR231	110	137	15	230	160	230	480	1 120	138	15	± 8.0
110RCPH192	110PHR232	110	154	20	230	150	230	525	1 280	155	20	± 8.0
110RCPH193	110PHR233	110	154	20	230	180	225	500	1 200	155	20	± 10.0
110RCPH201	110PHR234	110	154	20	230	180	230	540	1 270	155	20	± 10.0
115RCPH201	115PHR241	115	173	20	240	220	240	600	1 400	174	15	± 6.0
120RCPH181	120PHR221	120	163	20	220	145	220	360	965	164	20	± 10.5
120RCPH182	120PHR222	120	164	20	220	160	220	360	965	165	20	± 10.5
120RCPH201	120PHR231	120	157	15	234	165	235	540	1 340	158	20	± 8.0
120RCPH211	120PHR251	120	151	20	250	180	250	610	1 430	152	20	± 6.0
120RCPH212	120PHR252	120	151	20	250	190	250	525	1 310	152	20	± 10.0
120RCPH213	120PHR253	120	153	20	250	145	250	560	1 340	154	20	± 9.0
120RCPH214	120PHR254	120	154	20	250	180	250	565	1 380	155	20	± 8.0
120RCPH215	120PHR255	120	154	20	250	190	250	570	1 400	155	20	± 10.0
120RCPH216	120PHR256	120	179	20	255	230	255	630	1 580	180	20	± 8.0
130RCPH201	130PHR241	130	184	20	240	175	240	455	1 320	185	20	± 10.5
130RCPH221	130PHR261	130	157	20	270	180	260	615	1 520	158	20	± 6.0
130RCPH221	130PHR271	130	154	20	270	190	270	545	1 420	155	20	± 10.0
130RCPH222	130PHR272	130	154	20	270	190	270	585	1 480	155	20	± 9.0
130RCPH223	130PHR262	130	145	18	265	145	250	545	1 270	146	18	± 7.5
130RCPH224	130PHR263	130	157	20	265	180	265	625	1 530	158	20	± 6.0
130RCPH231	130PHR273	130	143	20	270	197	250	555	1 270	144	20	± 6.0
130RCPH232	130PHR281	130	174	20	280	160	280	760	1 890	175	20	± 9.0

Remarks: Other bearings are available. Please contact NSK for additional information.



Bearing Numbers		Boundary Dimensions (mm)					Roll diameter d ₁	Basic Load Ratings (kN)		Guide Roll		perm. ax. movem. (mm)
Bearing	Housing	d	B ₁	r	L	H		C _r	C _{0r}	roll length BL	Radius r ₁	
135RCPH211	135PHR251	135	183	20	250	160	250	515	1 350	184	20	± 10.0
140RCPH221	140PHR261	140	184	20	260	185	260	565	1 410	185	20	± 10.5
140RCPH222	140PHR262	140	174	20	265	242.5	265	620	1 590	175	20	± 9.0
140RCPH223	140PHR263	140	191	20	265	250	265	615	1 570	192	20	± 6.0
140RCPH231	140PHR271	140	179	20	270	245	270	665	1 750	180	20	± 6.0
140RCPH232	130PHR281	140	159	25	270	180	280	615	1 590	160	25	± 8.0
140RCPH233	140PHR282	140	163	20	280	180	280	665	1 610	164	20	± 6.0
140RCPH261	140PHR311	140	184	20	310	175	310	840	1 970	185	20	± 9.0
145RCPH231	145PHR281	145	179	20	280	250	280	680	1 860	180	20	± 8.0
145RCPH232	145PHR282	145	196	20	280	260	280	675	1 800	197	20	± 6.0
145RCPH233	145PHR283	145	196	20	280	250	280	675	1 800	197	20	± 10.0
145RCPH251	145PHR291	145	208	20	295	270	295	880	2 230	209	20	± 6.0
150RCPH251	150PHR291	150	208	20	295	310	295	754	1 870	209	20	± 6.0
150RCPH252	150PHR301	150	169	20	295	180	300	715	1 880	170	20	± 9.0
150RCPH271	150PHR321	150	187	20	320	220	320	955	2 320	188	20	± 9.0
155RCPH251	155PHR301	155	199	20	300	260	300	770	1 970	200	20	± 8.0
160RCPH261	160PHR311	160	199	20	310	270	320	845	2 270	200	20	± 9.0
160RCPH281	160PHR331	160	200	20	330	225	320	1 070	2 650	201	20	± 7.0
160RCPH271	160PHR321	165	228	25	320	280	320	925	2 440	229	25	± 6.0
170RCPH271	170PHR321	170	214	20	320	255	330	855	2 330	215	20	± 10.0
170RCPH281	170PHR331	170	235	25	330	280	330	1 100	2 870	236	25	± 6.0
180RCPH281	180PHR341	180	235	25	340	280	340	980	2 490	236	25	± 6.0
180RCPH291	180PHR331	180	169	20	335	217.5	335	780	1 800	170	20	± 8.0
190RCPH331	190PHR391	190	233	20	390	280	370	1 510	3 850	234	20	± 6.0

Remarks: Other bearings are available. Please contact NSK for additional information.